

"I've Got to Find A Way"

for the series My Little Pony, Season 3

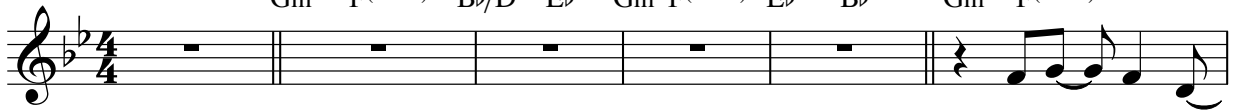
music and lyrics by **Daniel Ingram**

TWILIGHT SPARKLE

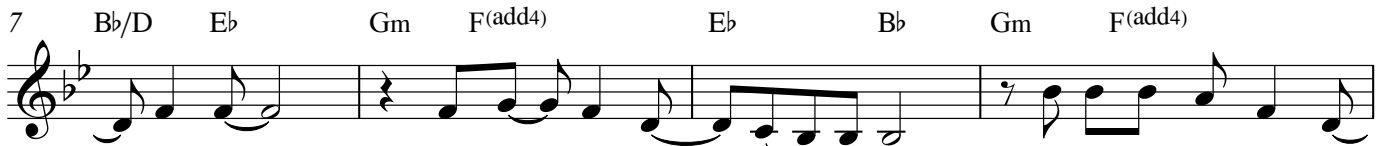
♩ = 118

Instrumental

Gm F(add4) Bb/D Eb Gm F(add4) Eb Bb Gm F(add4)



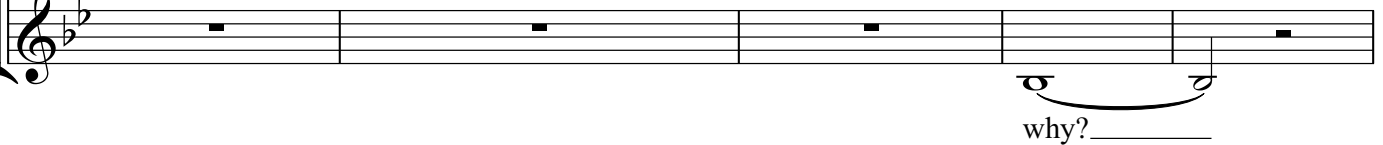
I have to find



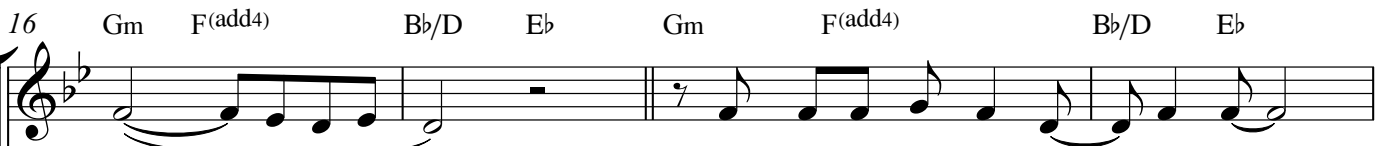
— a way, To make this all ok - ay, I can't be-lieve this small



— mis- take— Could have caused so much heart ache, Oh why?— Oh



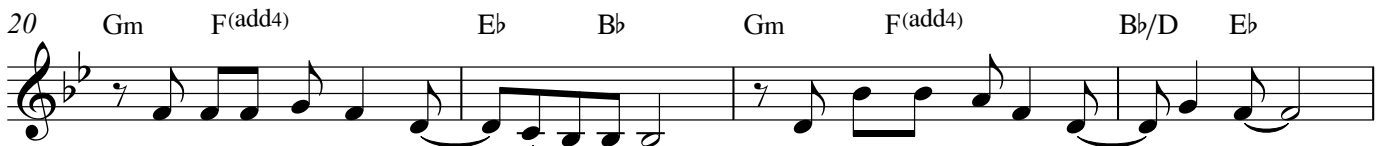
why?—



why?— Some-thing is wrong it's plain to see—



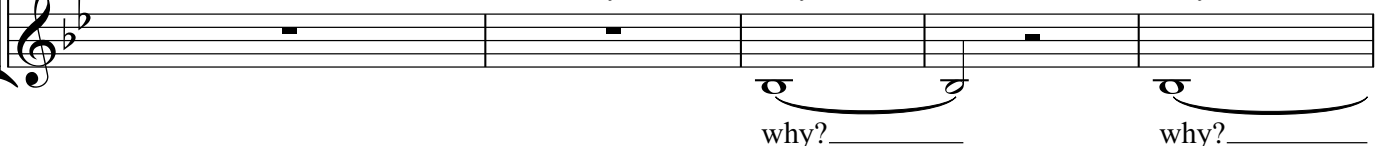
why?—



This is-n't how it's meant to be— And you can't see it like I do—



It's not the life that's meant for you— Oh why?— Oh why?—



why?—

why?—

A

29 B \flat /D E \flat F Gm A \flat E \flat /G F E \flat F

Los - ing pro - mise I don't know what to do, Seek - ing ans - wers I

Los - ing pro - mise I don't know what to do, Seek - ing ans - wers I

36 Gm F Cm E \flat F(add2) GmF(add4) B \flat /D E \flat Gm F(add4)

fear I won't get through to you... I'll try_____ And I'll try_____

fear I won't get through to you... try_____ try_____

try_____ try_____

43 B \flat /D E \flat Gm F(add4) B \flat /D E \flat Gm F(add4) B \flat /D E \flat B \flat

I'll try_____ And I'll try_____

try_____ try_____

try_____ try_____